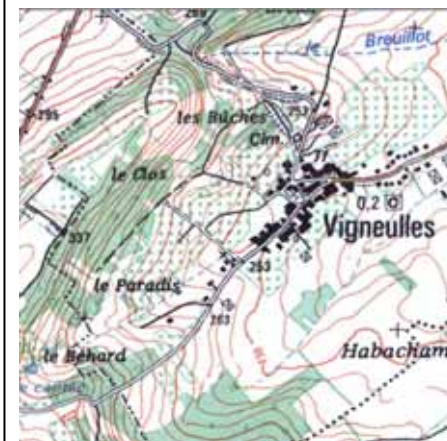
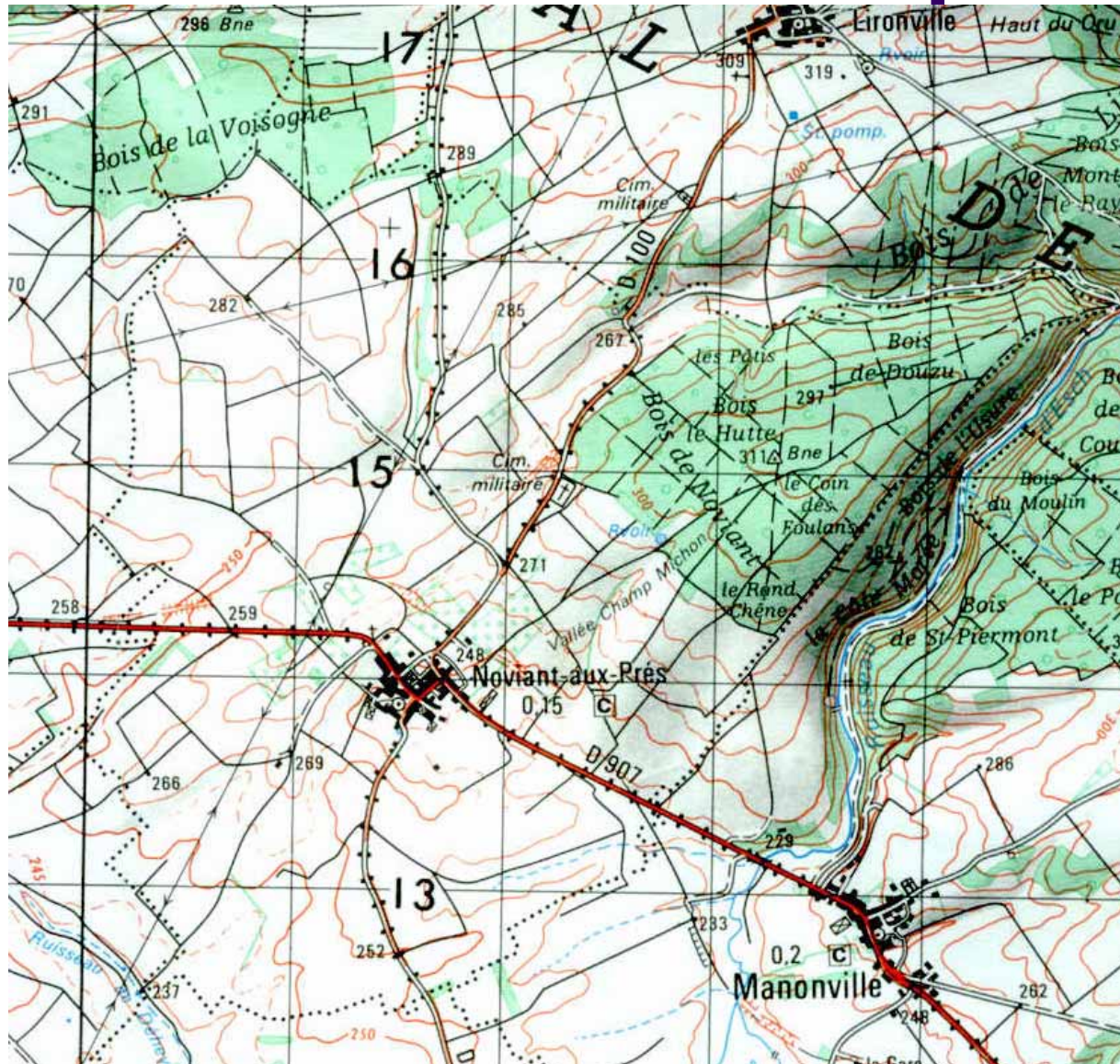


Guide pour la réalisation d'un croquis communal

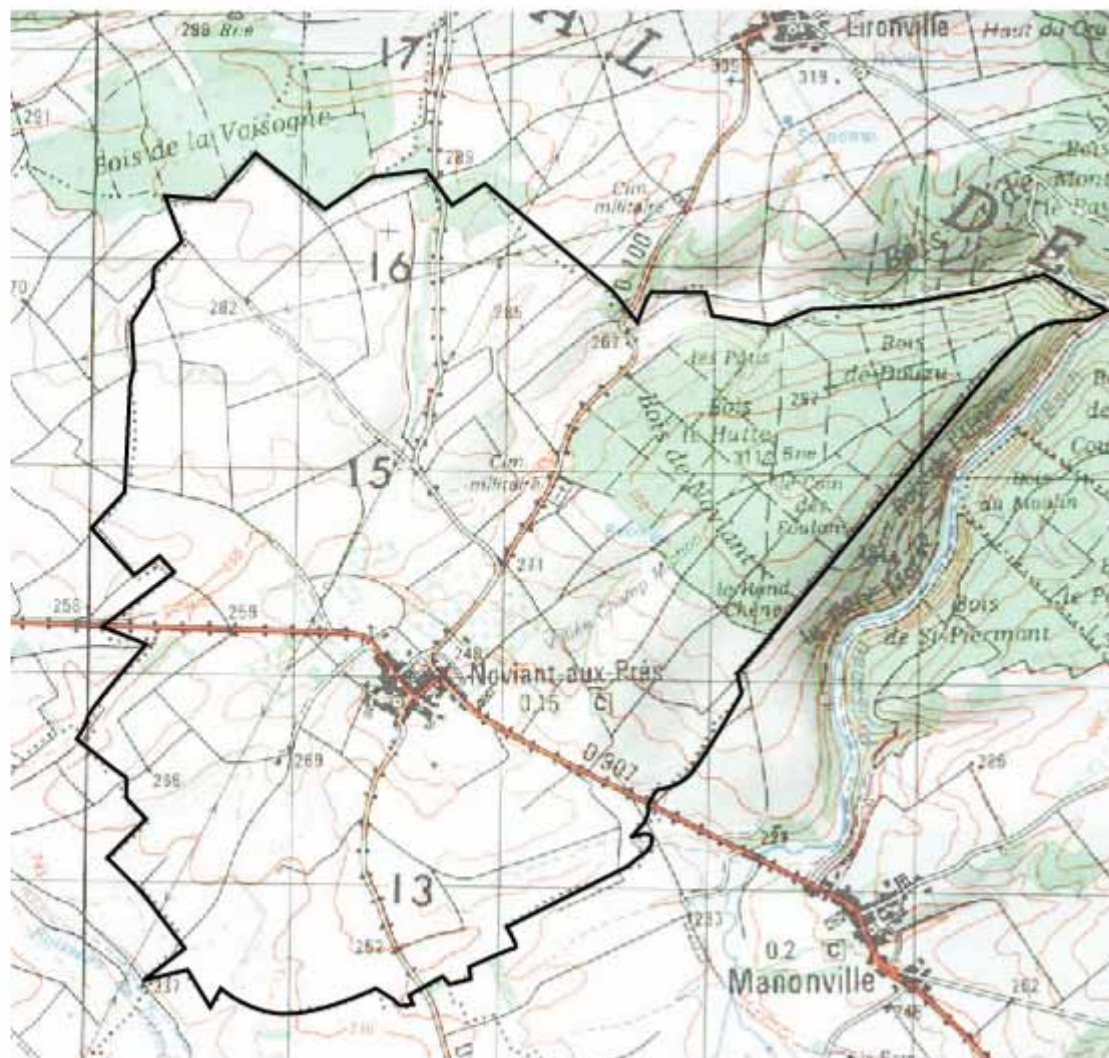


Fiche méthodologique n°3
U102 Initiation à la lecture
de carte

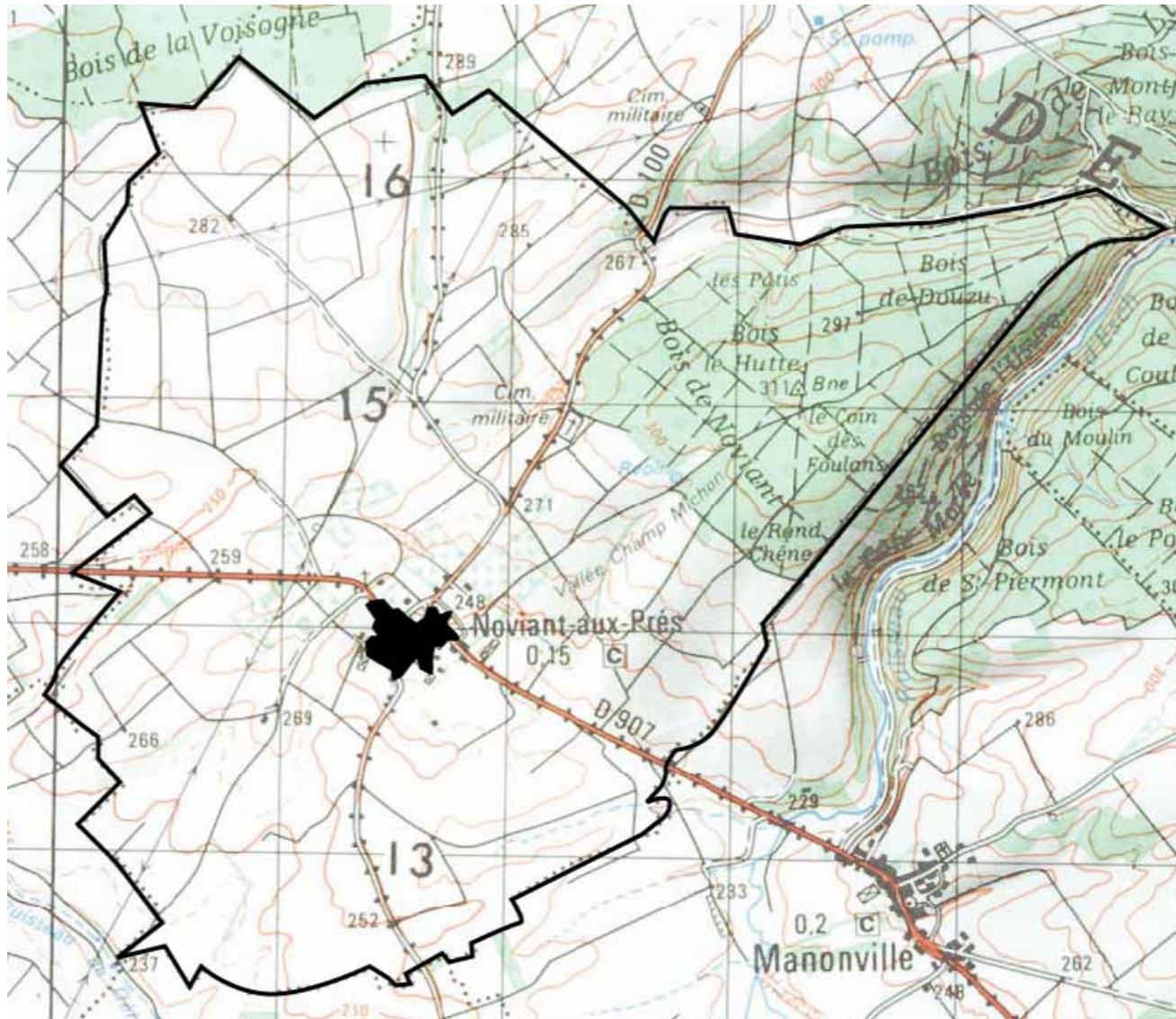
1) Repérer la commune et centrer la feuille de calque



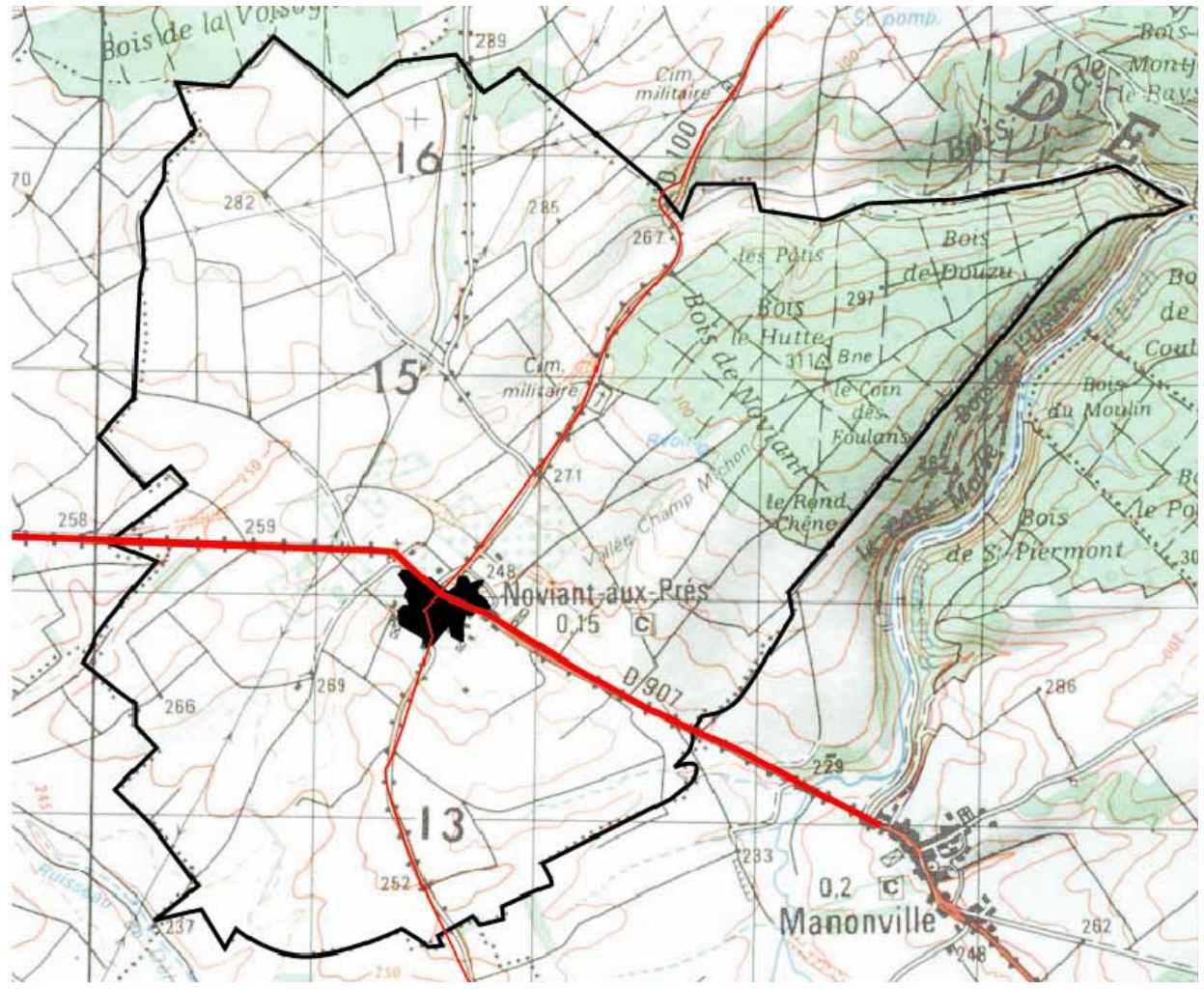
2) Repasser les limites de la communes



3) Dessiner grossièrement le bâti

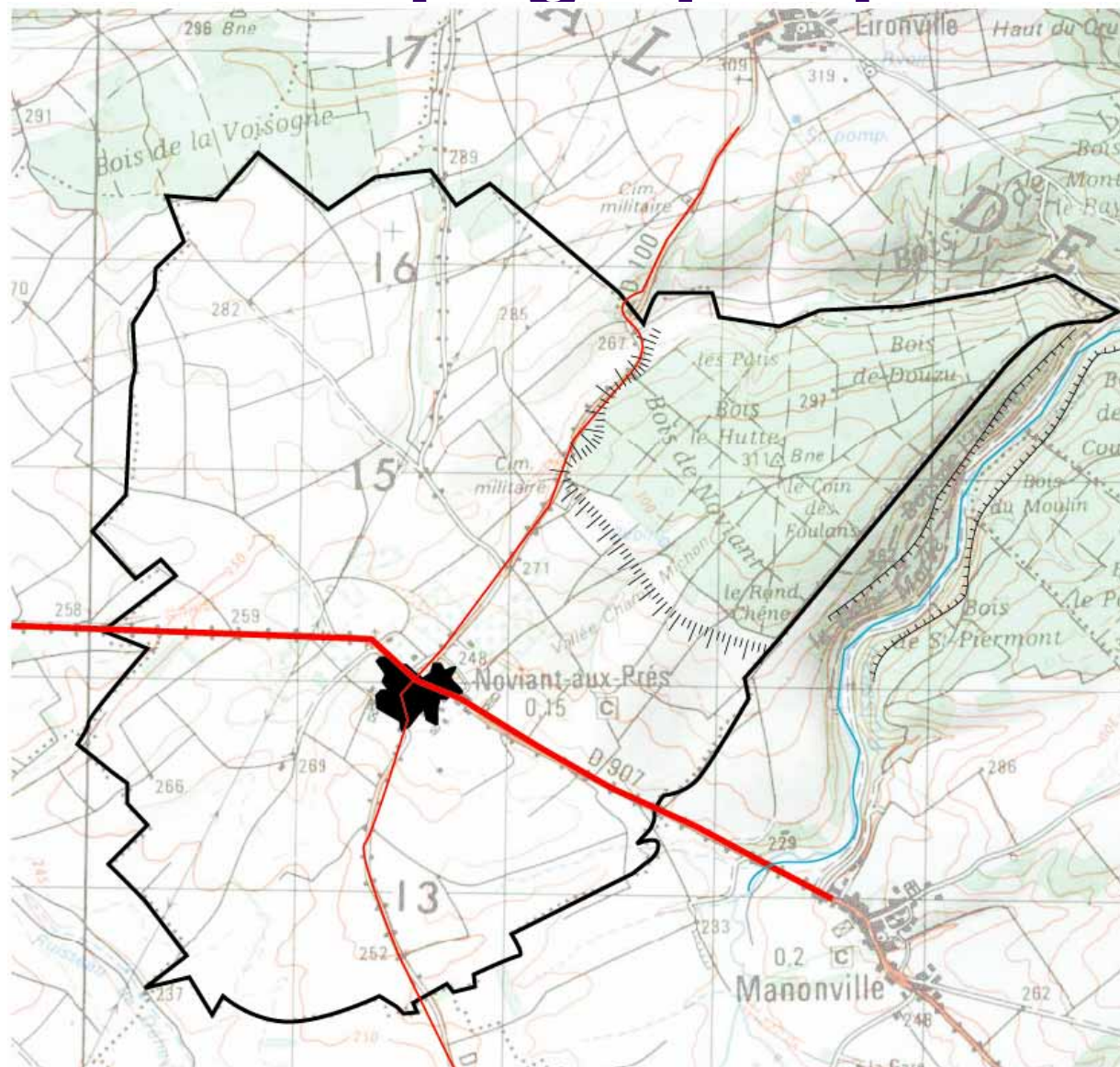


4) Noter les voies de communication principales

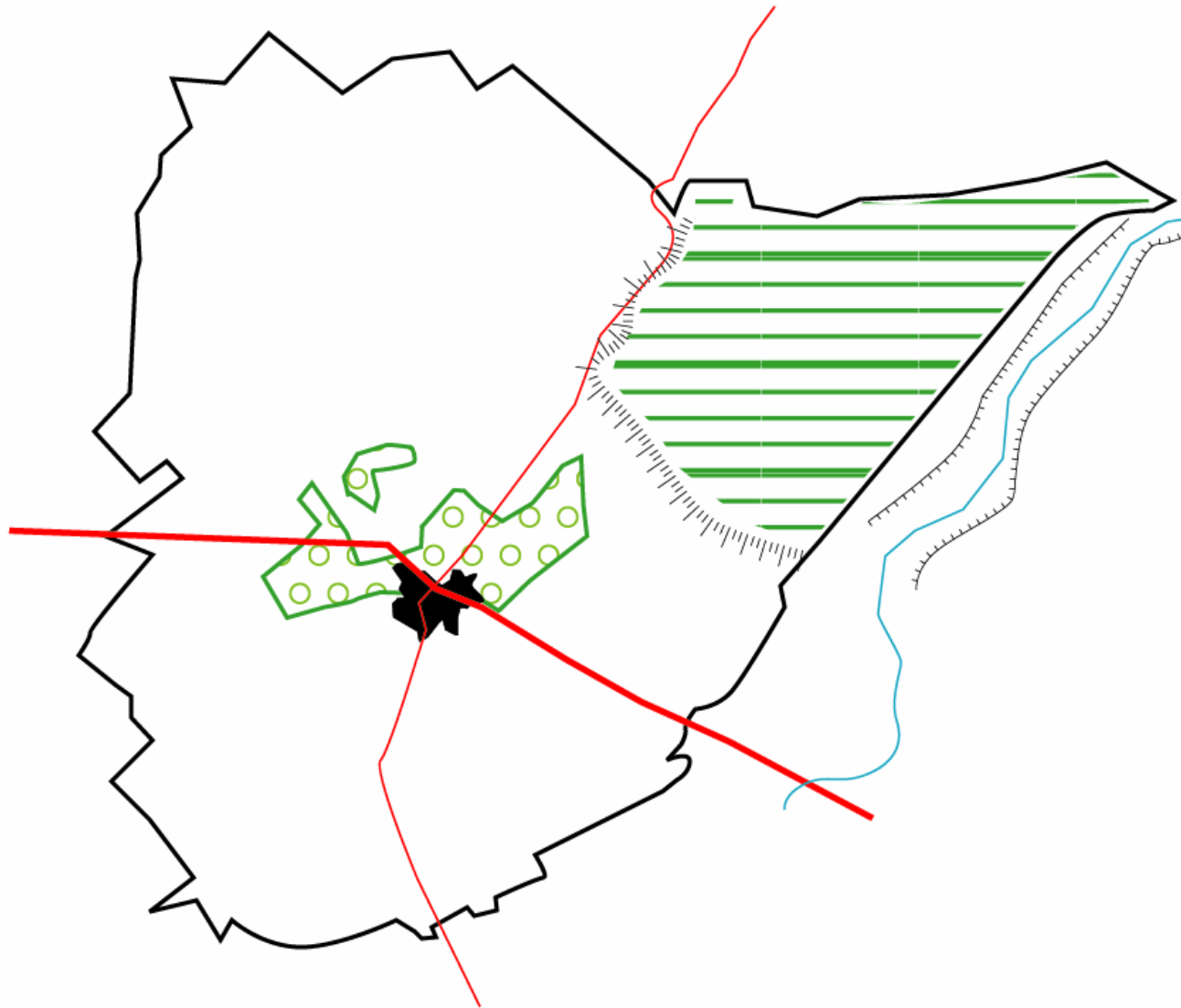


Important : hiérarchiser les voies de communication en fonction de leur importance

5) Représenter les principales inflexions topographiques



6) Représenter les différents terroirs agricoles

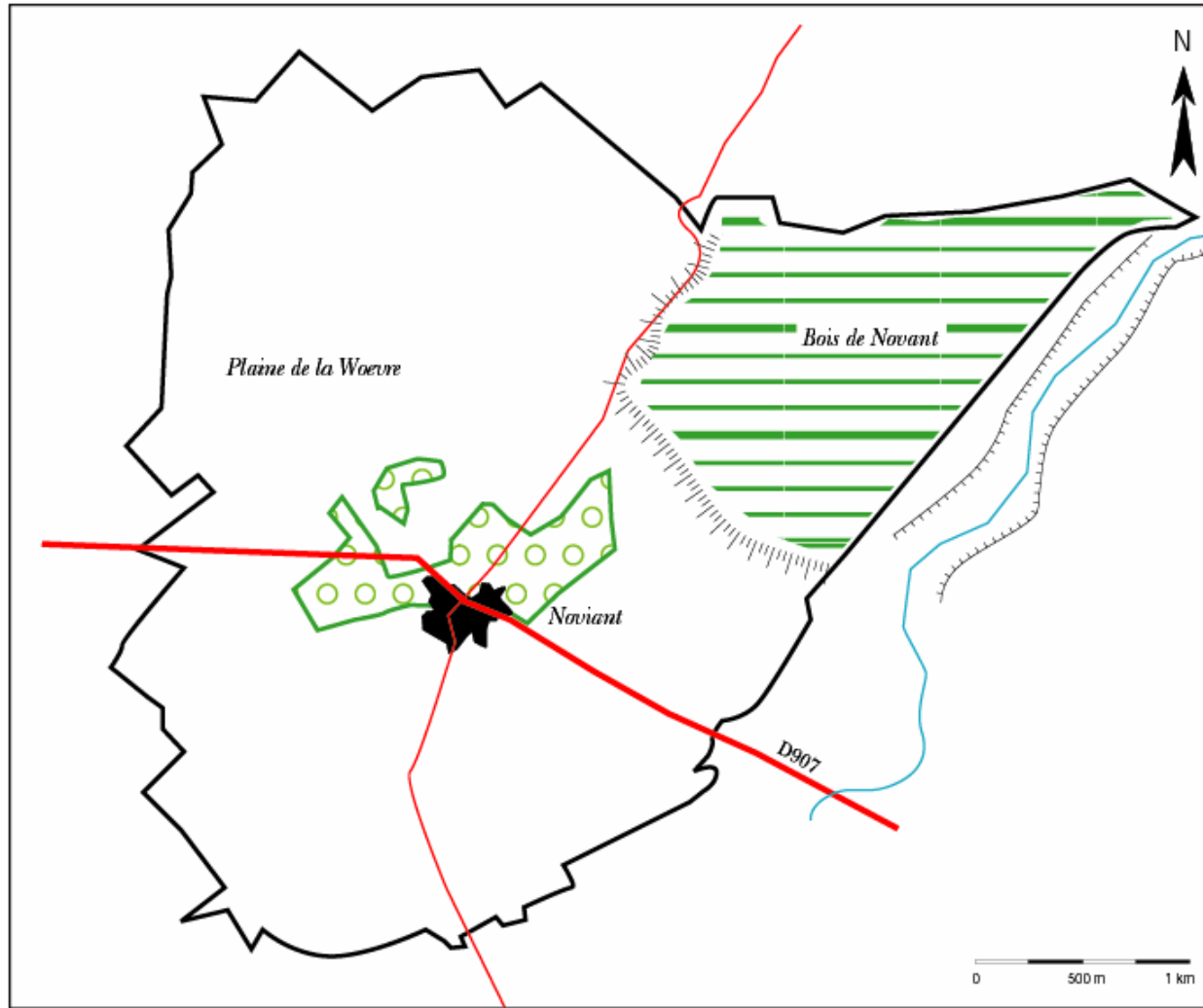


7) Habiller le croquis




Croquis communal de Noviant aux Près






Croquis communal de Noviant aux Près



I - Deux terroirs complémentaires

-  Le plateau forestier
-  Le rebord du plateau : pente douce
-  Une plaine humide en près ou en culture.

II - Noviant, village lorrain

-  Village groupé
-  Le long de la route de pied de côte
-  Les vignes et vergers aux abords du village